



**Imagery to support  
the  
World Trade Center  
Recovery Efforts**

Bill Johnson

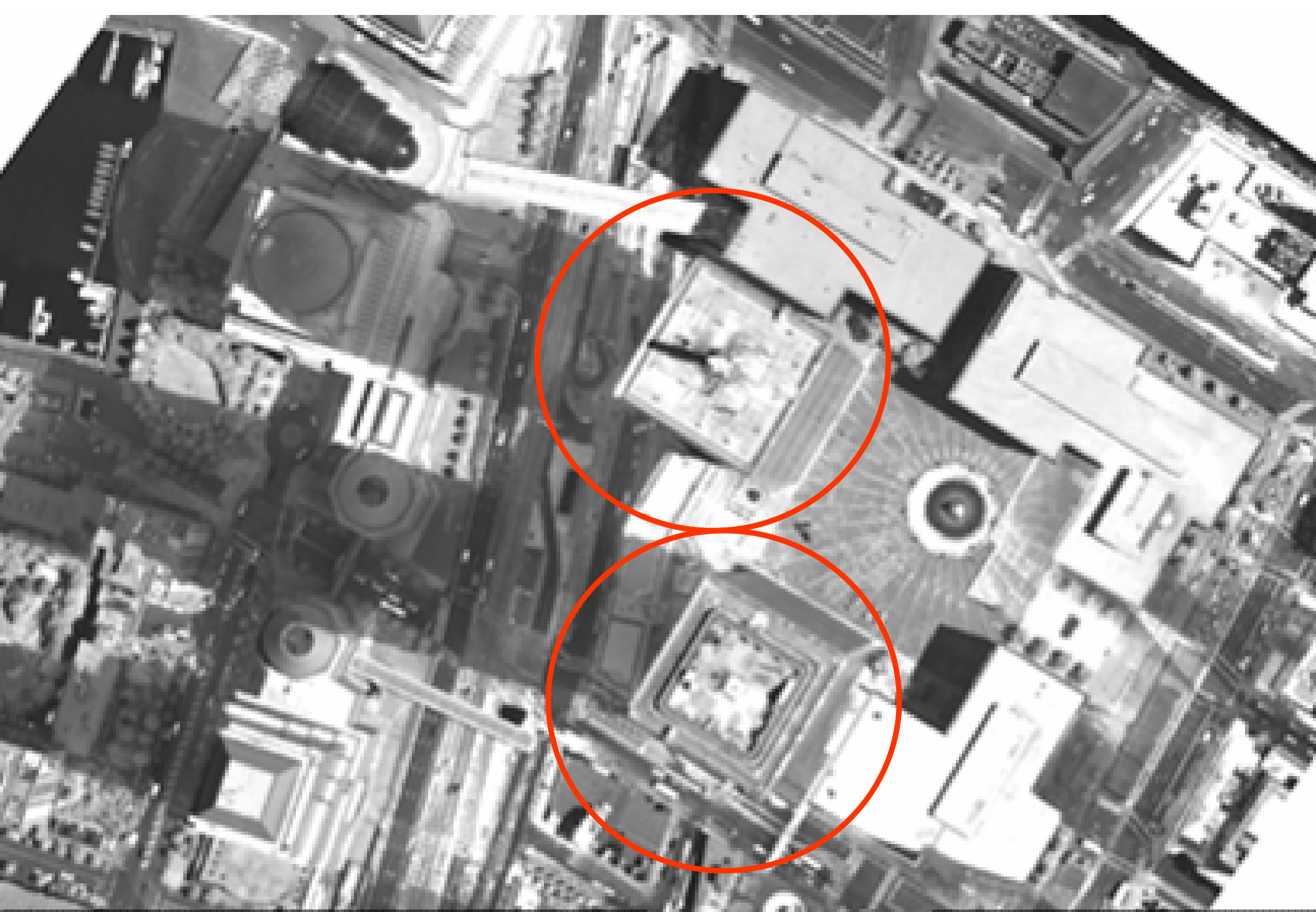
NYS Office of Cyber Security & Critical Infrastructure Coordination





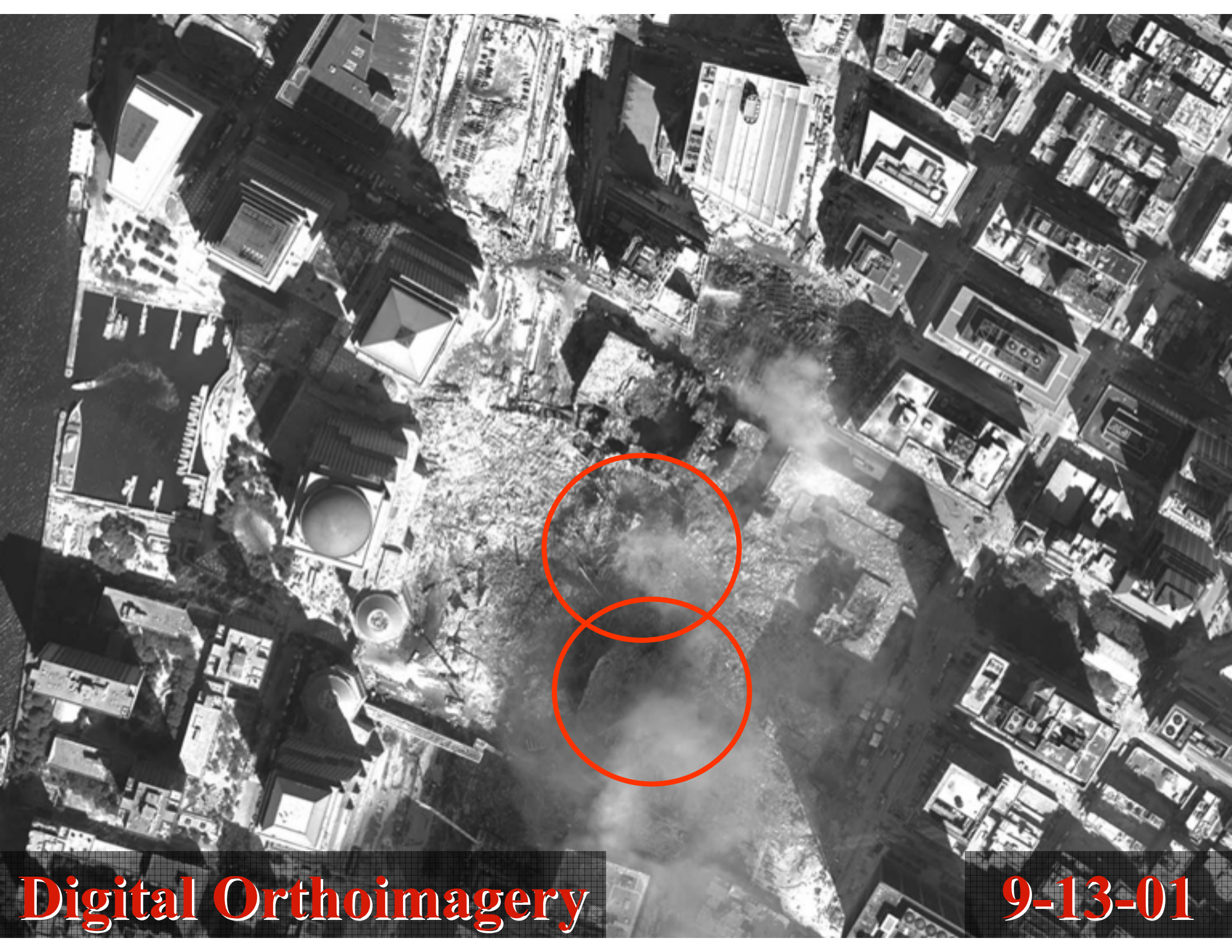
**35 mm handheld  
aerial oblique**

**9-15-01**



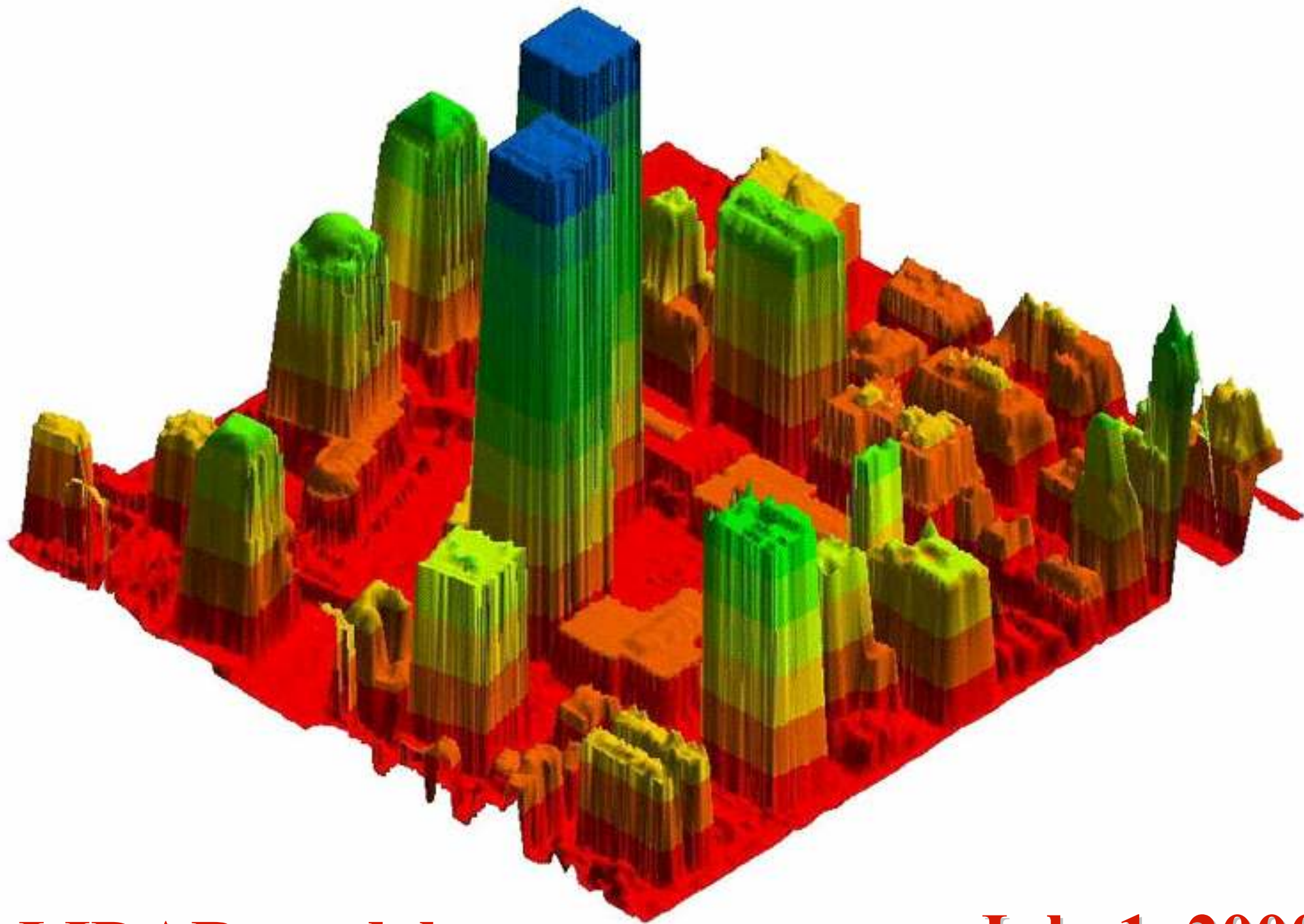
**Digital Orthoimagery**

**July 1, 2000**



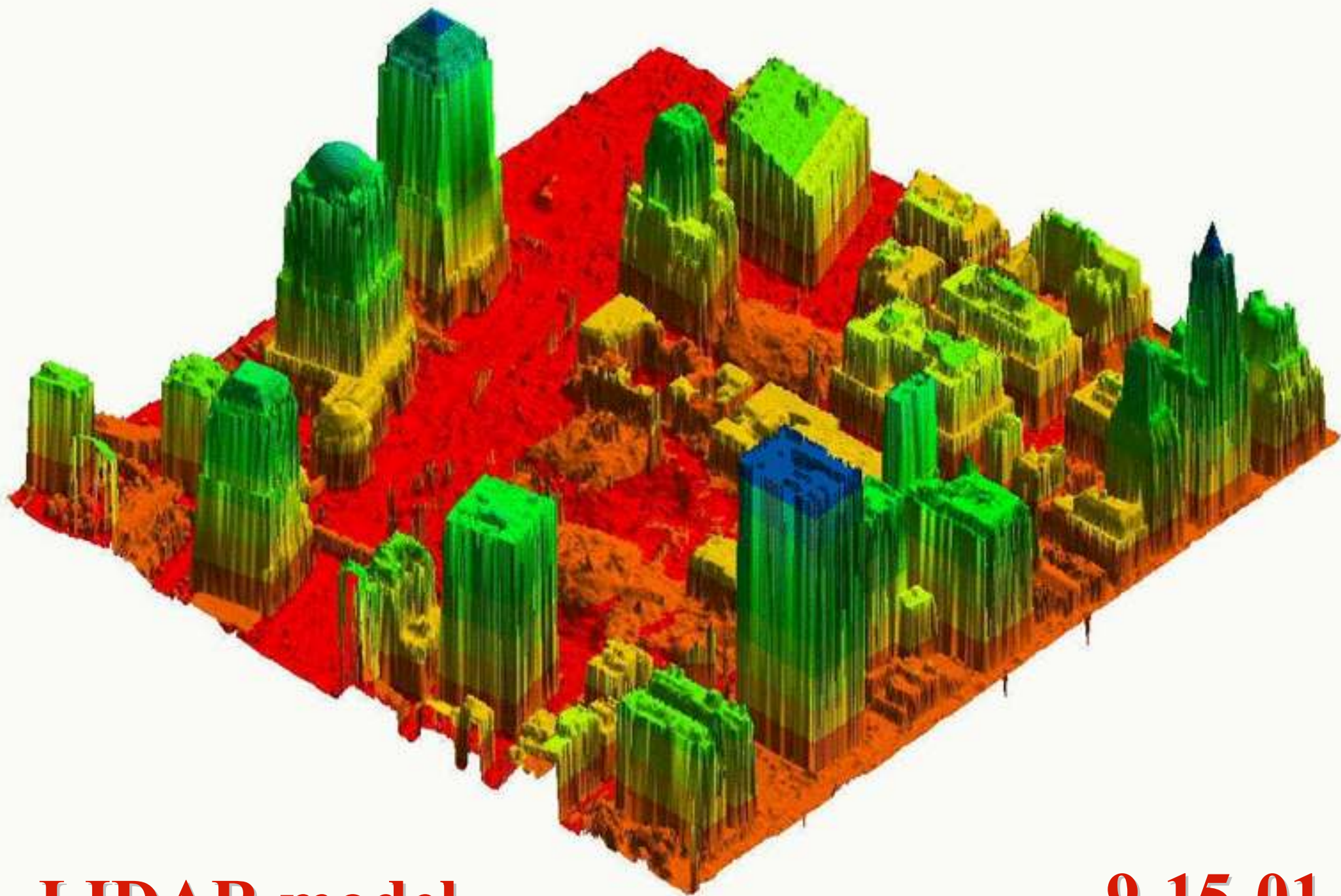
**Digital Orthoimagery**

**9-13-01**



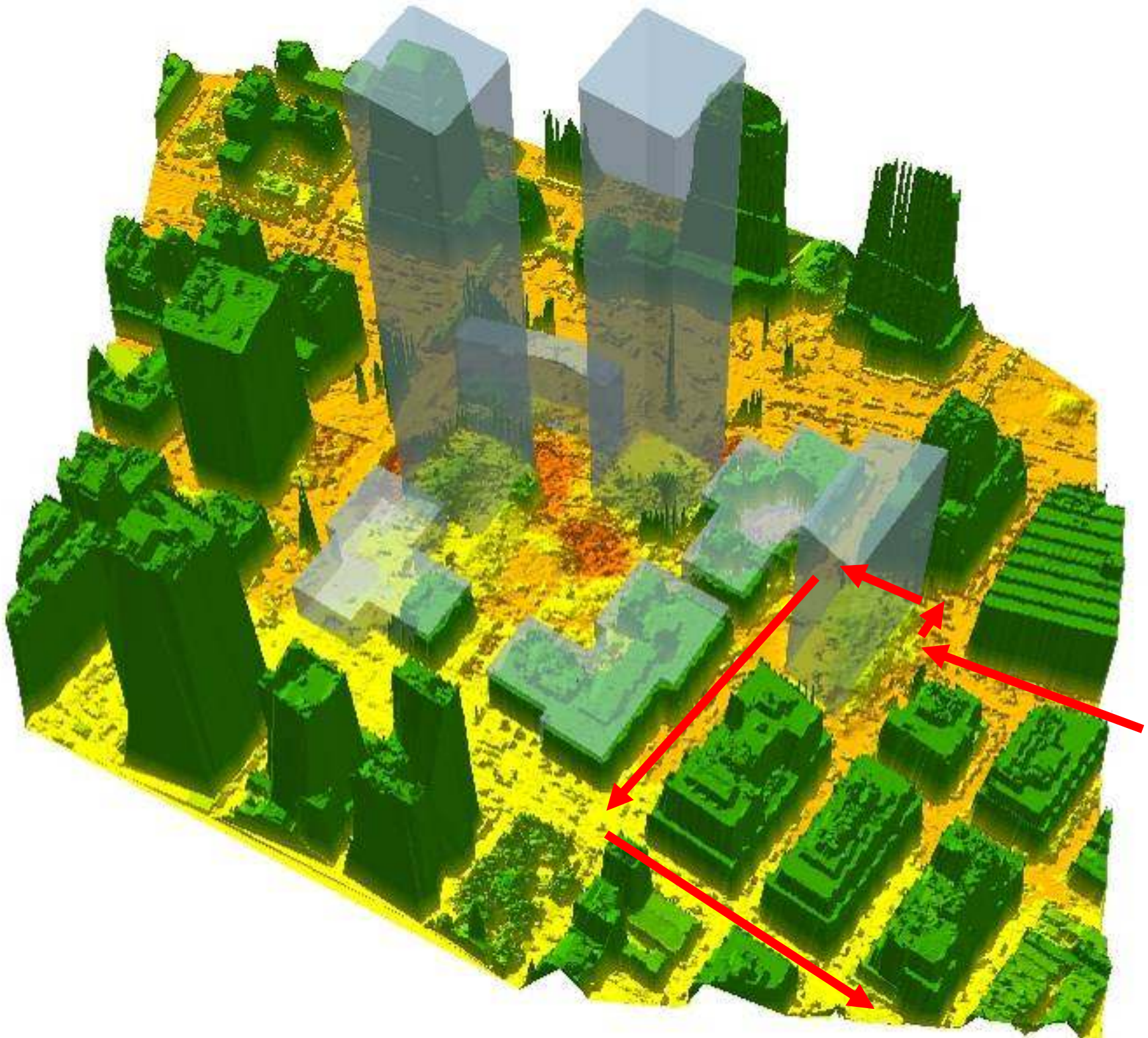
**LIDAR model**

**July 1, 2000**



**LIDAR model**

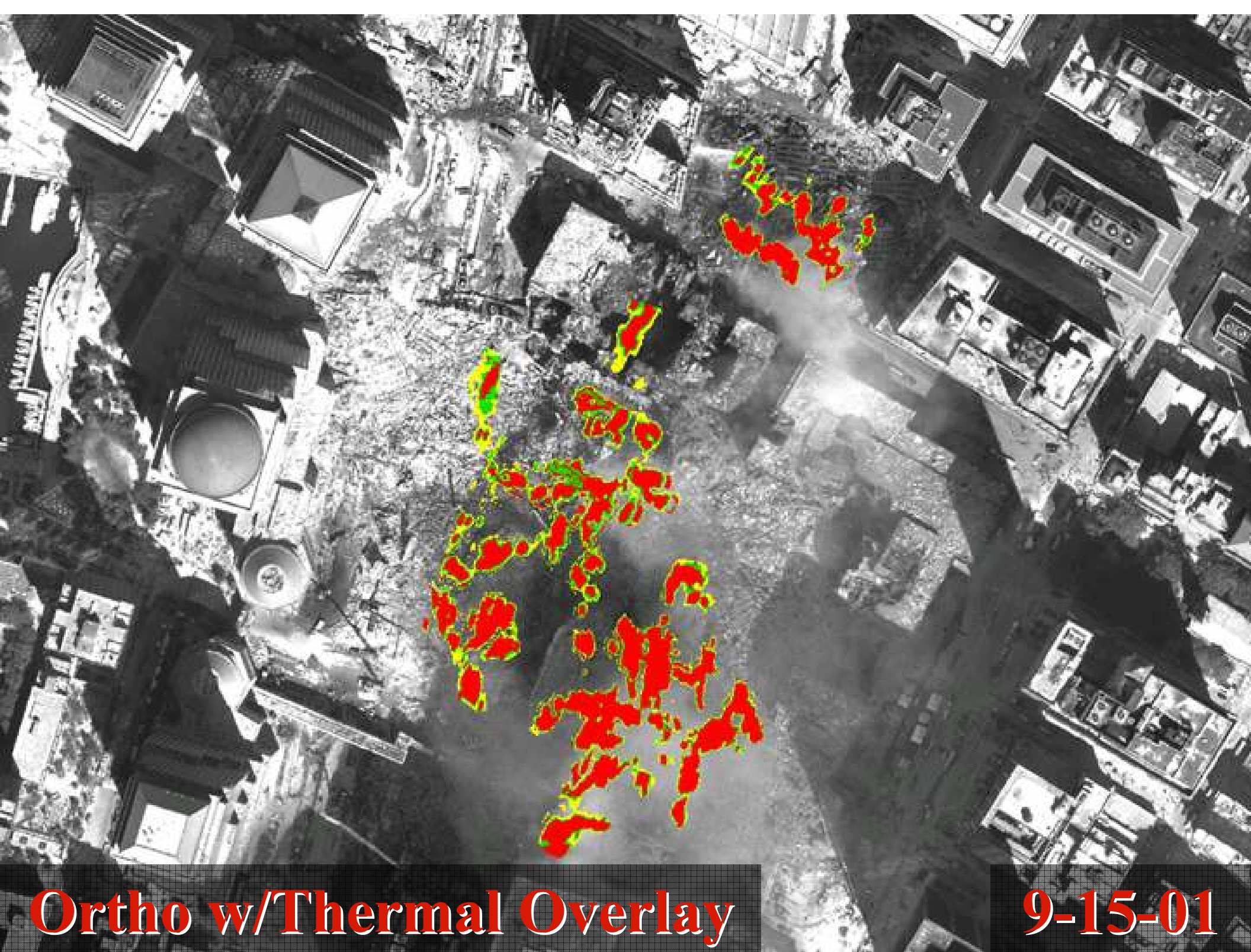
**9-15-01**





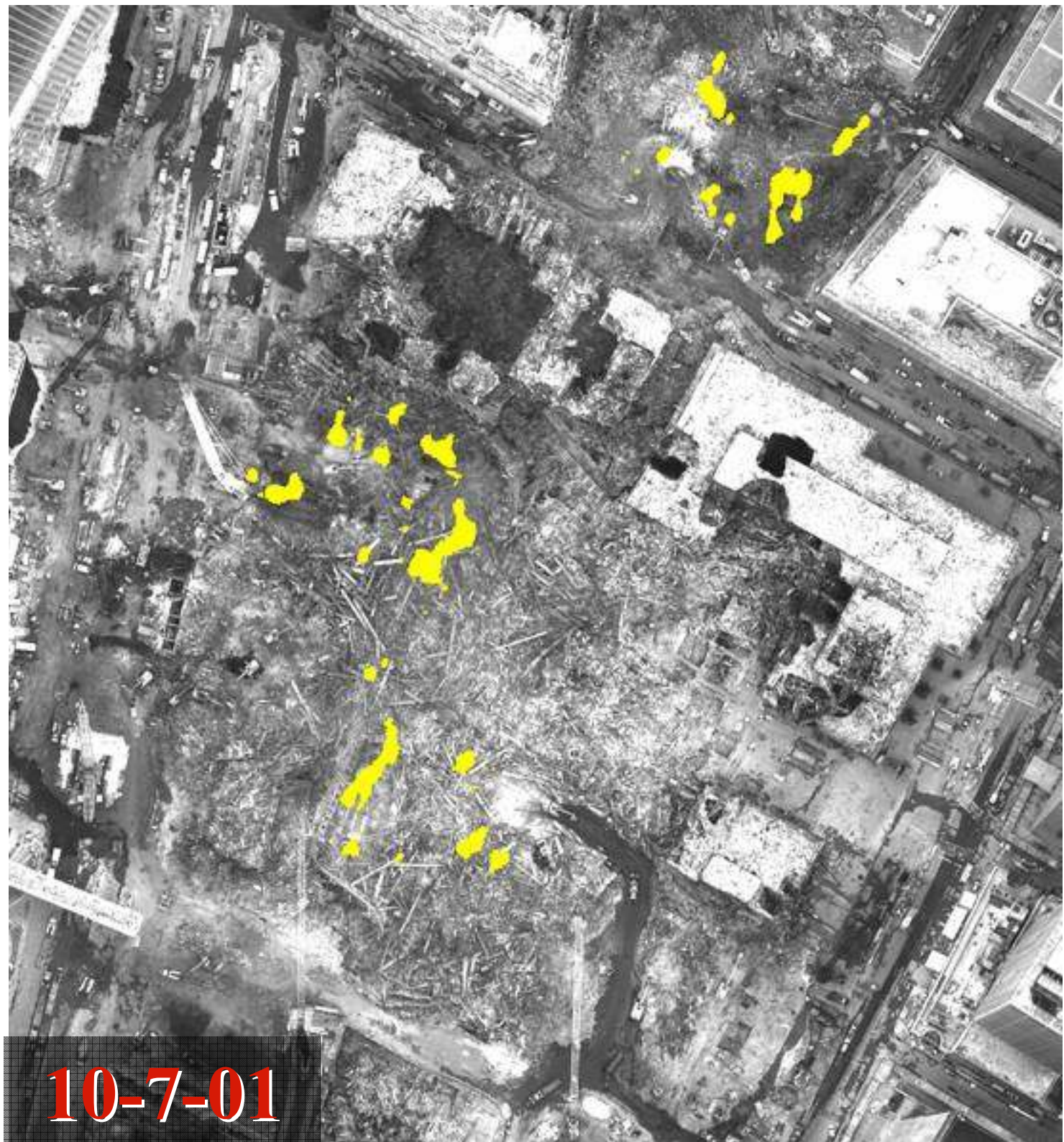


9-27-01

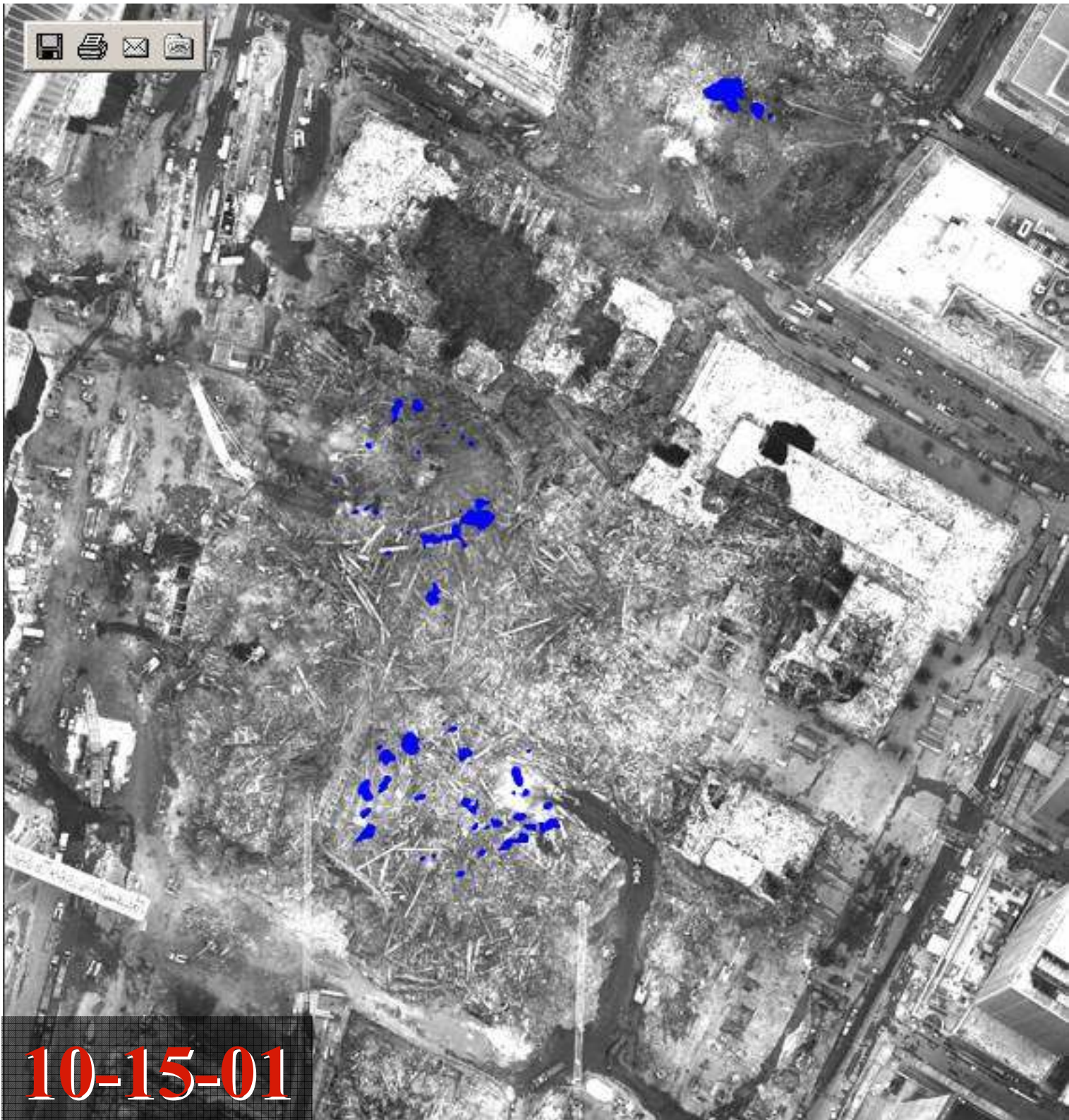


**Ortho w/Thermal Overlay**

**9-15-01**



**10-7-01**



**10-15-01**



**10-21-01**

# NYC Emergency Operations Center Pier 92



# Emergency Mapping and Data Center



Cells





Ground Zero Conditions- 09/30/01

46

City of New York  
Emergency Mapping Center  
MapScale: 1:25000

Aerial photograph of Ground Zero in Lower Manhattan on September 30, 2001. The image shows the extensive rubble and destruction of the World Trade Center site. A north arrow and a scale bar are located at the bottom left of the image.

11

DOWNTOWN AND FINANCIAL SECTION

BATTERY PARK CITY

A map of the Downtown and Financial Section of Lower Manhattan. The map shows the street grid, major roads, and the location of Battery Park City. A red tab with the number 11 is in the top right corner.

27

Ground Zero with 2 Block Radius

Aerial photograph showing the area around Ground Zero with a 2-block radius. The image shows the surrounding buildings and streets, providing context for the location of the World Trade Center site.



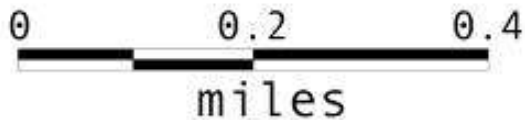


# WTC DAMAGED BUILDINGS



## LEGEND

- 1 1 WTC NORTH TOWER
- 2 2 WTC SOUTH TOWER
- 3 3 WTC MARRIOTT HOTEL
- 4 4 WTC SE PLAZA BUILDING
- 5 5 WTC NE PLAZA BUILDING
- 6 WTC CUSTOM HOUSE
- 7 7 WTC TISHMAN CENTER
- 8 NORTH BRIDGE
- 9 1 LIBERTY PLAZA
- 10 MILLENIUM HOTEL
- 11 EAST RIVER SAVINGS BANK
- 12 FEDERAL BUILDING
- 13 N. Y. TELEPHONE COMPANY
- 14 3 WFC AMEX & LEHMAN BROS.
- 15 2 WFC MERRILL LYNCH
- 16 SOUTH BRIDGE
- 17 1 WFC DOW JONES OPPENHEIMER
- 18 ST. NICHOLAS GREEK ORTHODOX CHURCH
- 19 90 WEST ST.
- 20 BANKERS TRUST



## FDNY SECTOR COMMAND POSTS

#	LOCATION	DESIGNATION
1	Vesey & West	WEST
2	Liberty & West	LIBERTY
3	Church & Liberty	CHURCH
4	Church & Vesey	VESEY



20010916

# Red Cross Shelters



Subway Service and Station Closures  
 Effective as of 12:00 AM Sept. 24th  
 Lower Manhattan  
 (Subject to Revisions)

**Legend**

**Station Status**

- ⊗ Closed
- Open
- No N-R Service
- No 1-9 Service



# Water Outages as of 6:00 PM, 9/22/01



**Lower Manhattan  
Bridge, Tunnel & Road Closures  
Sept 20, 2001 3 pm**

**Holland Tunnel  
CLOSED**

**Westside Highway  
South of Canal Street  
CLOSED, except Southbound from  
Brooklyn Battery Tunnel to Battery  
Park for buses using the Tunnel.**

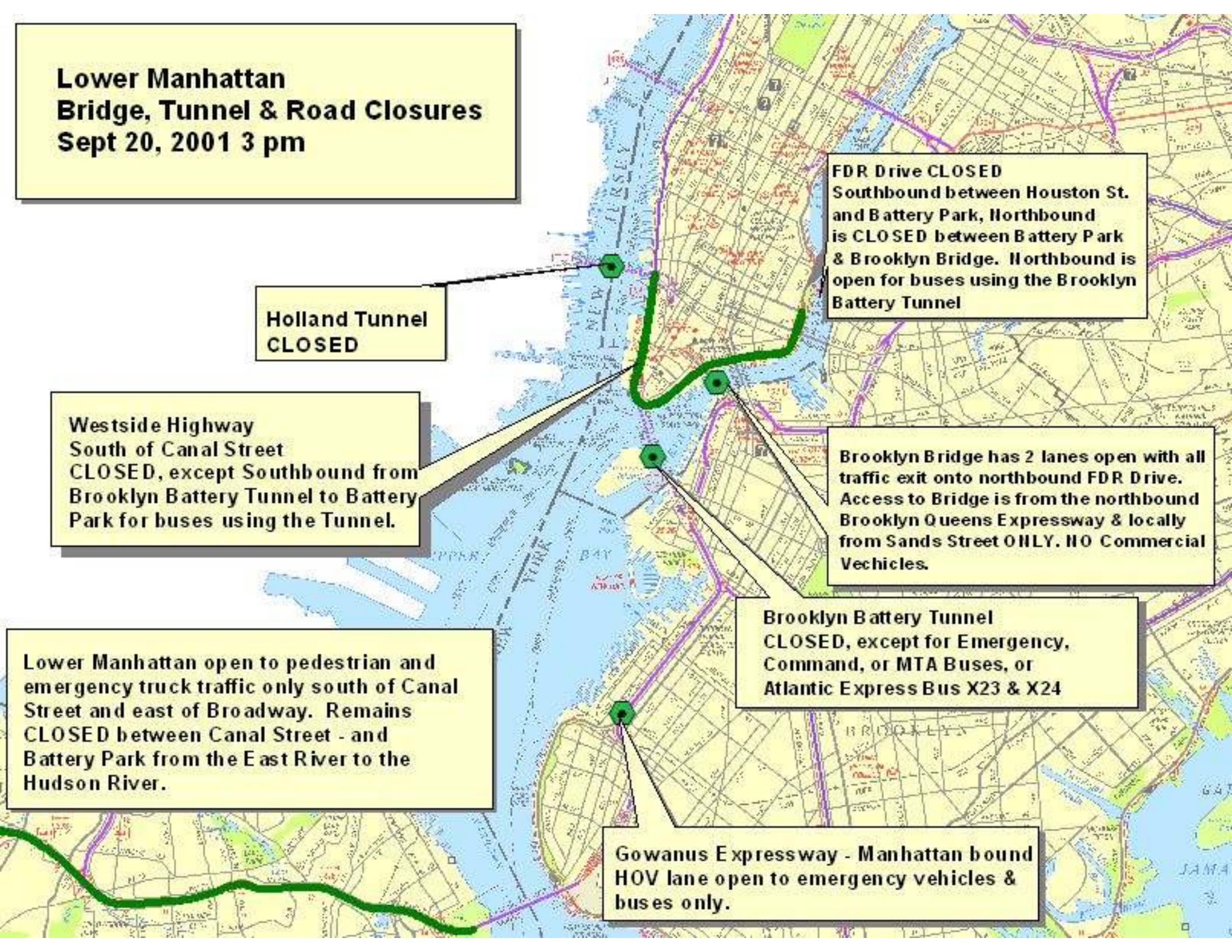
**Lower Manhattan open to pedestrian and  
emergency truck traffic only south of Canal  
Street and east of Broadway. Remains  
CLOSED between Canal Street - and  
Battery Park from the East River to the  
Hudson River.**

**FDR Drive CLOSED  
Southbound between Houston St.  
and Battery Park, Northbound  
is CLOSED between Battery Park  
& Brooklyn Bridge. Northbound is  
open for buses using the Brooklyn  
Battery Tunnel**

**Brooklyn Bridge has 2 lanes open with all  
traffic exit onto northbound FDR Drive.  
Access to Bridge is from the northbound  
Brooklyn Queens Expressway & locally  
from Sands Street ONLY. NO Commercial  
Vehicles.**

**Brooklyn Battery Tunnel  
CLOSED, except for Emergency,  
Command, or MTA Buses, or  
Atlantic Express Bus X23 & X24**

**Gowanus Expressway - Manhattan bound  
HOV lane open to emergency vehicles &  
buses only.**



WORLD TRADE CENTER  
EMERGENCY RESPONSE

TEAM

IMAGERY CENTER

NEW YORK STATE



TECHNOLOGY ACADEMY

**Classroom A**













WE WILL NEVER FORGET